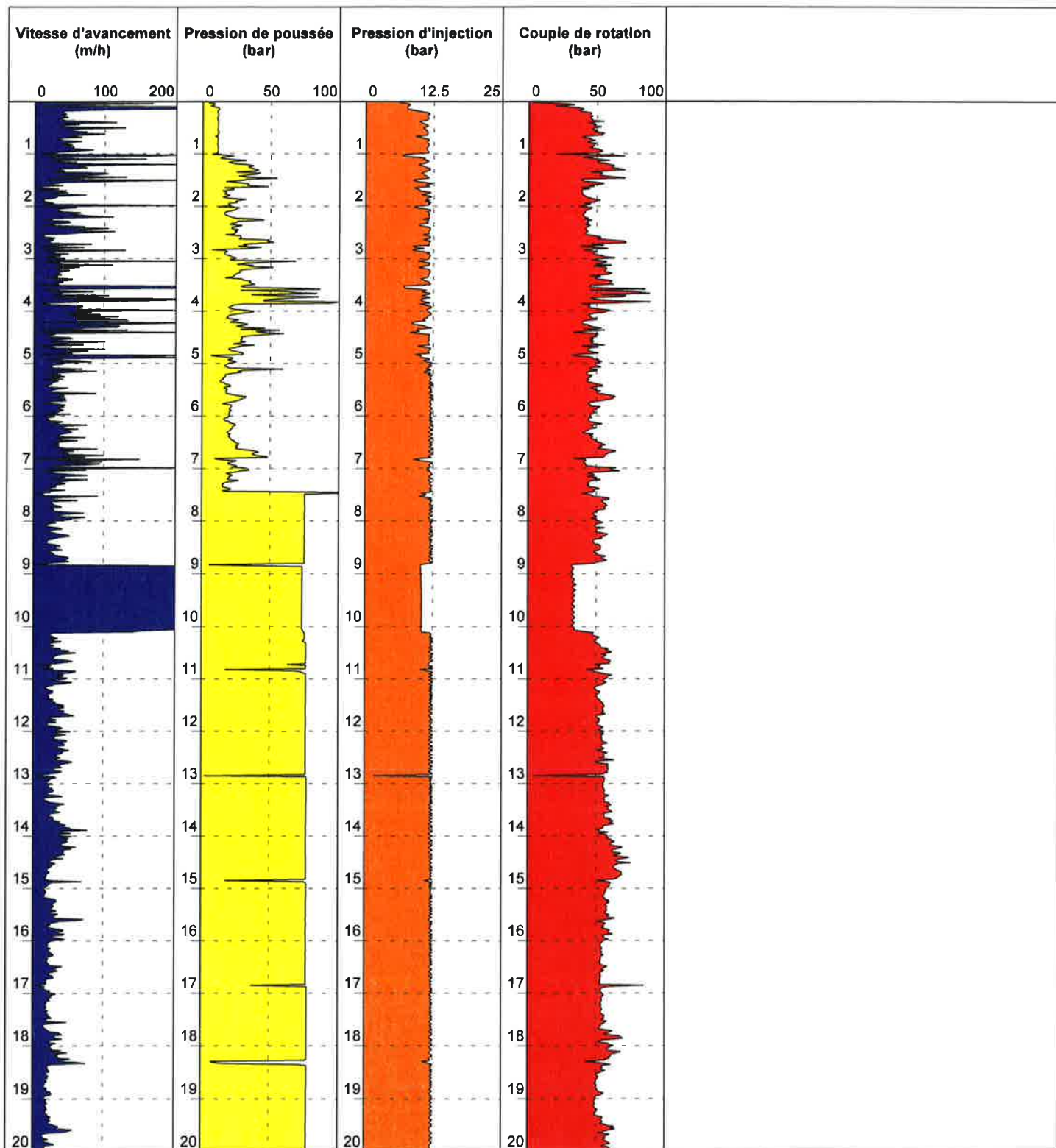
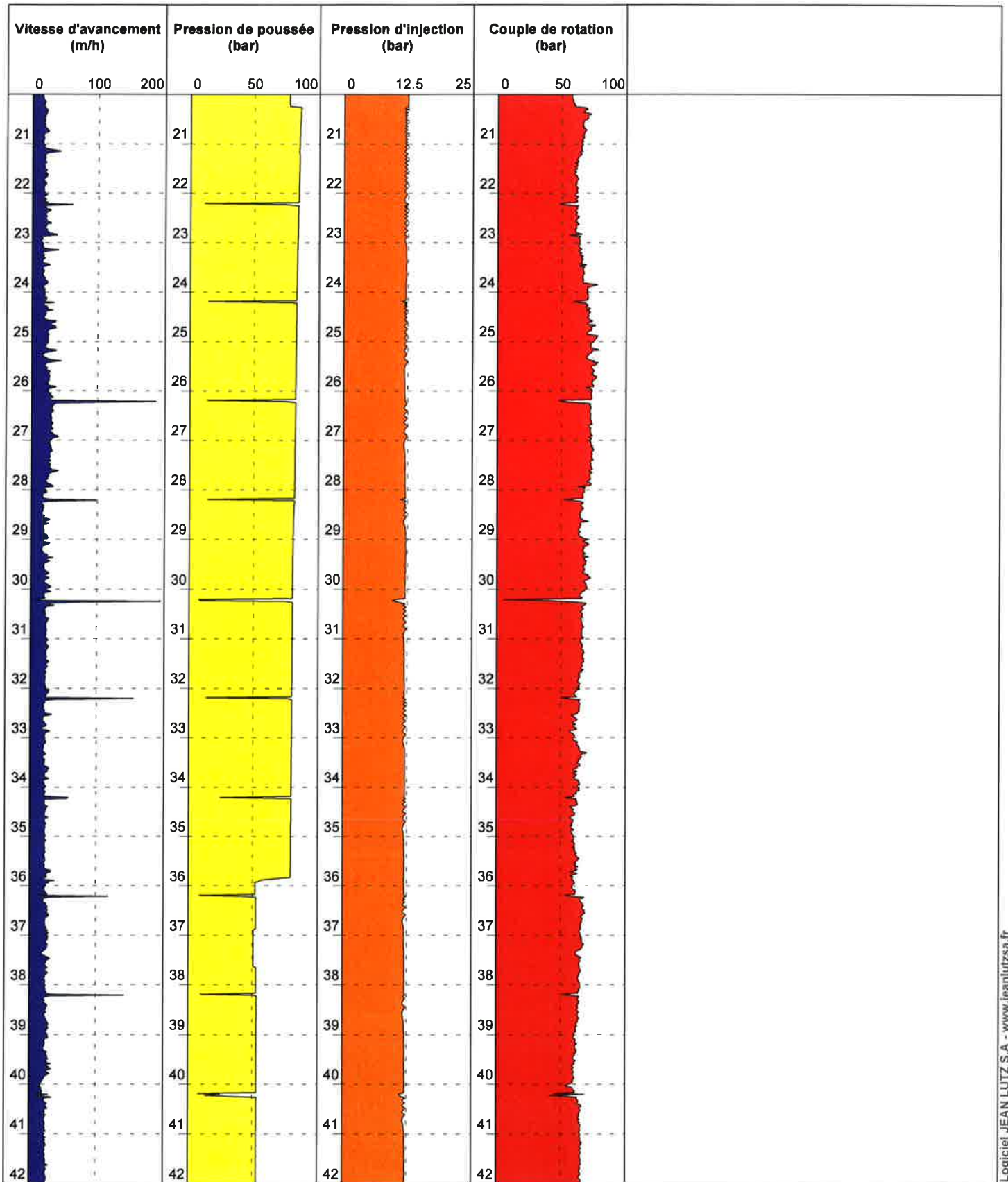
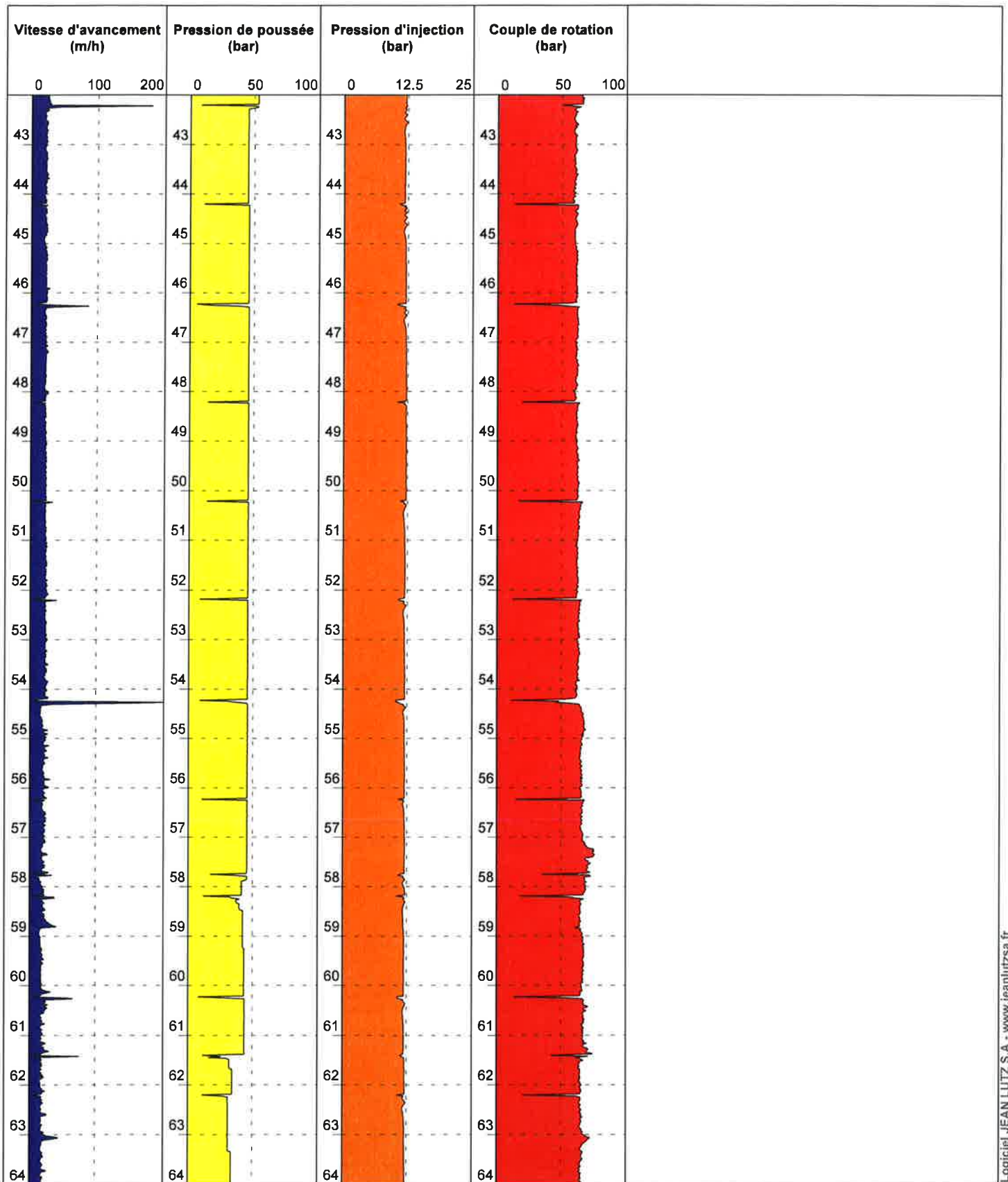


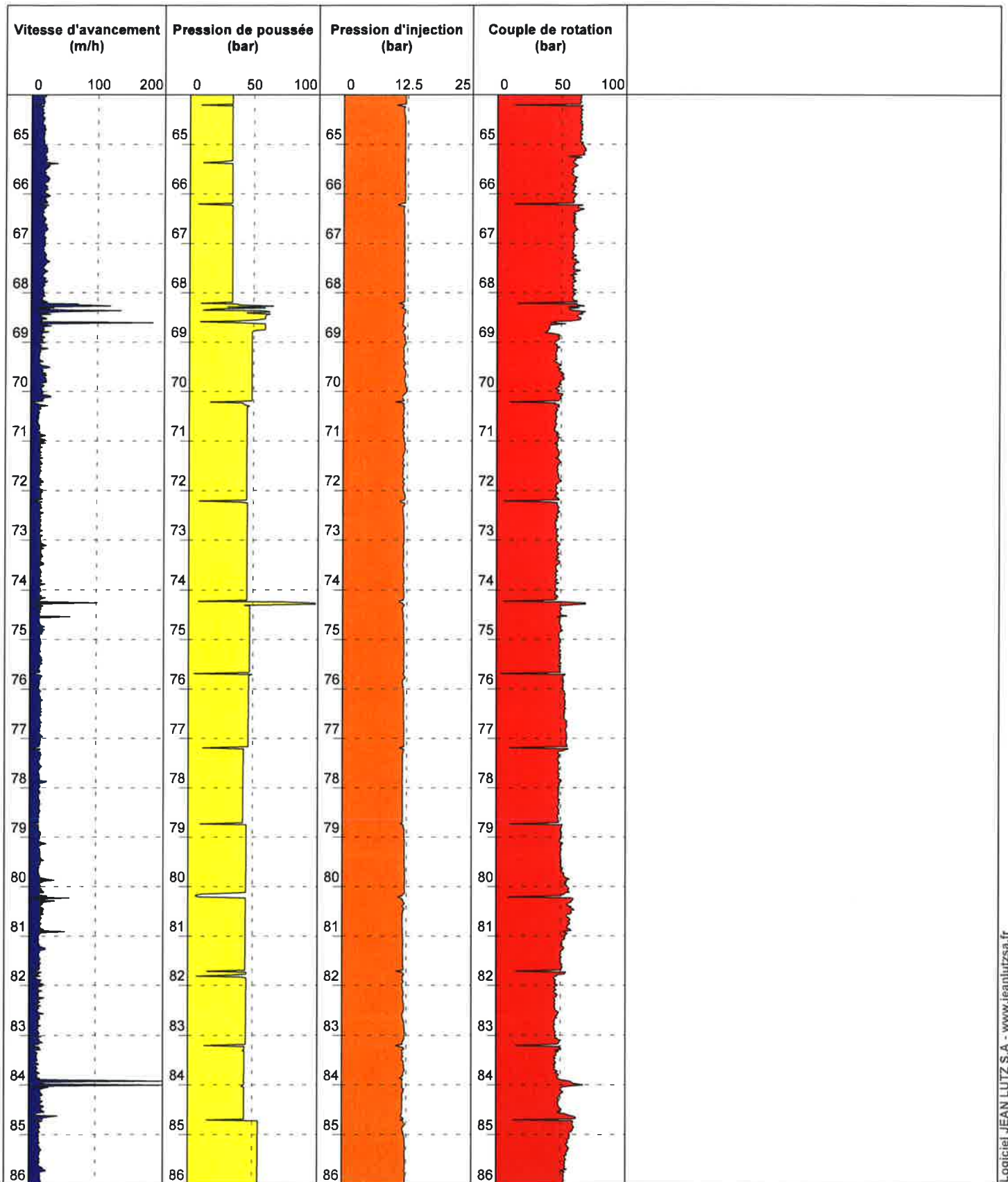
		(Contrat CMO2.D.830-14)
Projet Antiquailles		
Date : 07/04/2014	Machine : M414	Profondeur : 0.00 - 94.50 m
Heure début :		
Heure fin :		

1/100 **Forage : PZ1** EXEPF 5.24/LB2EPF546FR

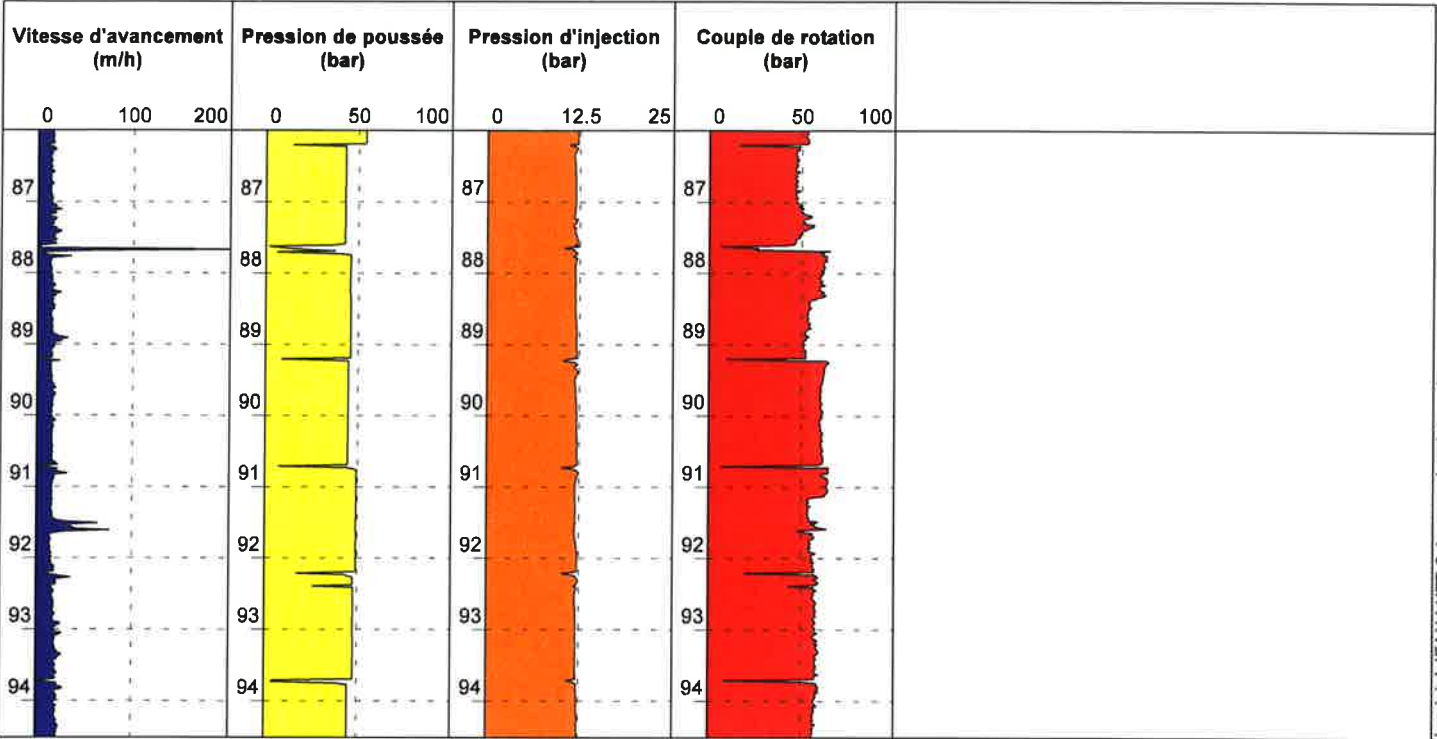








PZ1



Coupe technique de principe des piézomètres Pz1, Pz3 et Pz4 (extrait rapport GINGER CEBTP CMO2.D.830-13)

